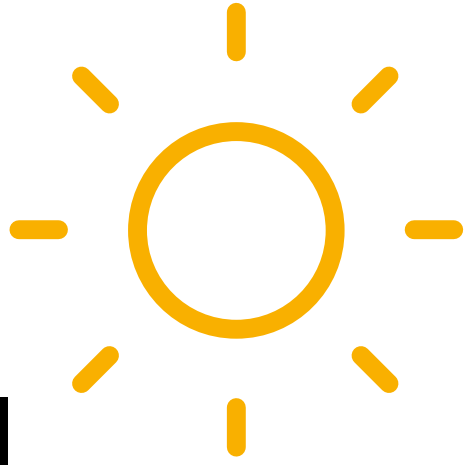


Home Support is when a care worker is matched to a child who has a substantial complex need or multiple disabilities and requires additional personal care and support.



DISABLED CHILDREN'S

Social Care Service



Home Support
for Disabled
Children



BIRMINGHAM
CHILDREN'S TRUST

You will be able to decide, along with the care worker, when you would like them to provide the care so that it best suits you and your child.

What is Home Support?

Home Support is when a care worker is matched to a child who has a substantial complex need or multiple disabilities and requires additional personal care and support.

The additional care the worker will provide can include:

- Help with washing and dressing;
- Helping the child/young person to develop social skills;
- Providing activities at home or outdoors;
- Befriending services in the community.

The package offered is intended to support improvements and to assist in the achievement of goals for your child.

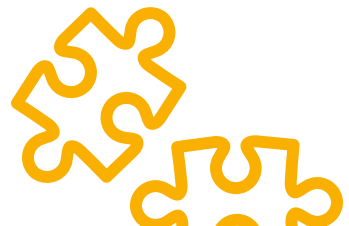
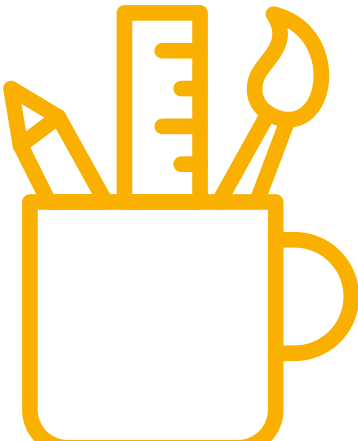


Who is eligible?

The service supports children and young people who meet the threshold for Disabled Children’s Social Care and who have been assessed as required personal care services and/or befriending services in their own home or in the community.

Who provides Home Support?

Home Support is provided by organisations who have a contract with Birmingham Children’s Trust. There are many different organisations available and your social worker or family support worker will be able to help you find the right organisation who can meet the care needs of your child.



How does Home Support work?

Your social worker or family support worker will assist you in completing a referral form which gives information about your child and their personal support needs.

You will then be sent a decision letter which will tell you how many hours of home support care your child will have each month and details about the organisation that will provide it.

You will be able to decide, along with the care worker, when you would like them to provide the care so that it best suits you and your child.

All decisions and the number of hours approved are subject to a review of care needs on an annual basis.



What should I do if there is a problem?

If you are unhappy with the care your child receives then you should tell your social worker or family support worker and also the organisation providing the care as soon as possible.



Get in touch

Birmingham Children's Trust
Disabled Children's Social Care
1 Lancaster Circus
PO BOX 15887
Birmingham
B2 2RZ

t: 0121 303 1888

f: 0121 303 3106

e: cass@birminghamchildrenstrust.co.uk

w: www.birminghamchildrenstrust.co.uk/dcsc

